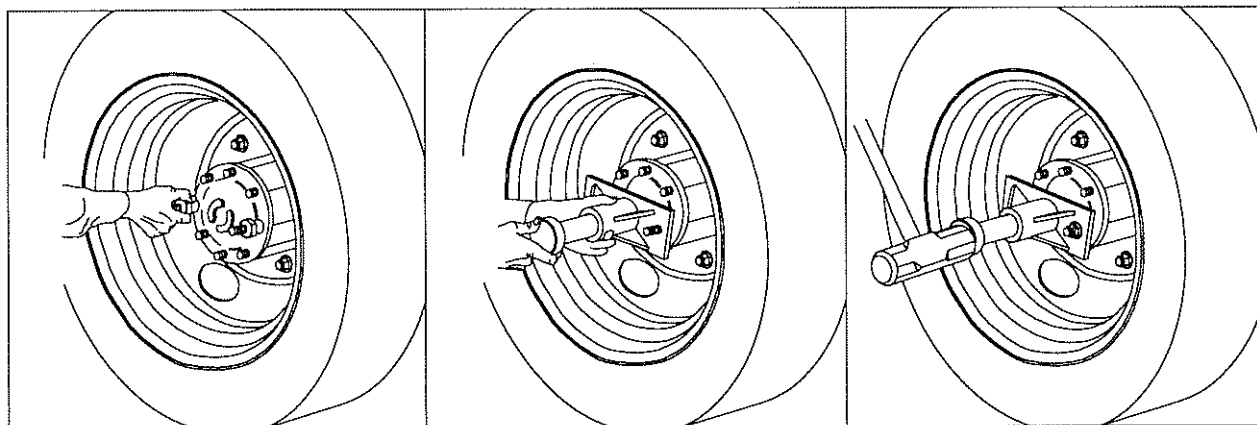
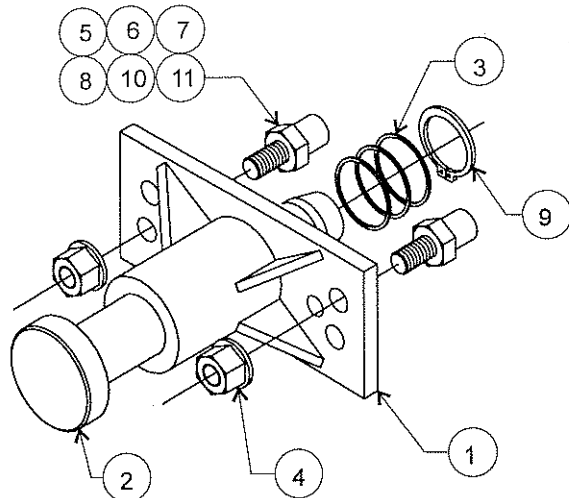


DIESEL ACCESSORIES, INC.**CAUTION!**

- 1.) ALWAYS WEAR EYE PROTECTION WHEN USING THIS TOOL.
- 2.) REPLACE DRIVE PIN WHEN EITHER END BECOMES CHIPPED, CRACKED OR MUSHROOMED.

- 1.) If axle flange drive lugs are flattened, remove any material that is projecting into the center of the flange.
- 2.) Thread adapter studs onto two opposite studs and tighten. Note: 5/8-18 adapter studs are provided with the K-1280. Other sizes are available from the factory - see Parts Illustration.
- 3.) Install the adapter plate over the studs. Three sets of holes are provided, which will accommodate most Eaton and Rockwell drive axles. Install and tighten the 5/8-11 flange nuts.
- 4.) Make certain the drive pin is in contact with the axle flange, then strike the drive pin until all dowels are loosened.

**PARTS ILLUSTRATION**

- 1 K-1280-1 ADAPTER PLATE
- 2 K-1280-2 DRIVE PIN
- 3 K-1280-3 RETURN SPRING
- 4 K-1280-6 5/8-11 HEX FLANGE NUT, (2) REQ'D.
- 5 K-1280-9 STUD ADAPTER, 5/8-18, (2) REQ'D.
- 6 K-1280-8 STUD ADAPTER, 9/16-18, (OPTIONAL)
- 7 K-1280-7 STUD ADAPTER, 1/2-20, (OPTIONAL)
- 8 K-1280-13 STUD ADAPTER, 3/4-16, (OPTIONAL)
- 9 K-1280-10 RETAINING RING
- 10 K-1280-14 STUD ADAPTER, 1/2-13, (OPTIONAL)
- 11 K-1280-15 STUD ADAPTER, 5/8-11, (OPTIONAL)